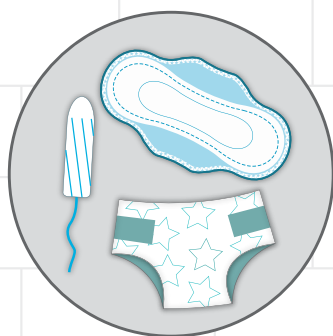


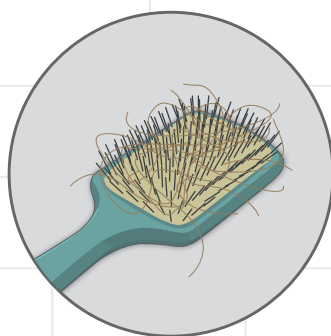
Óleyfilegt niðurhal?

Hugsum okkur um áður en halað er niður!

Allt sem við setjum í frárennslið hefur áhrif á nærumhverfi okkar. Eftirfarandi hlutir geta stíflað frárennslið, pípur og dælur eða mengað umhverfið og á ekki að sturta niður í klósettið.



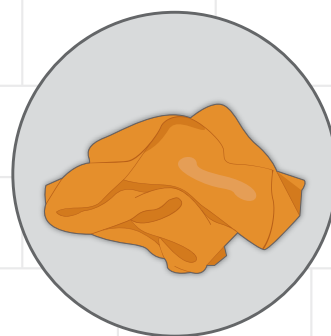
Dömubindi, bleyjur og tíðatappar



Hár



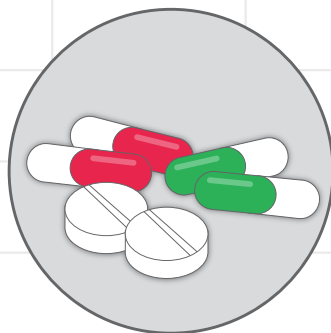
Plastpokar



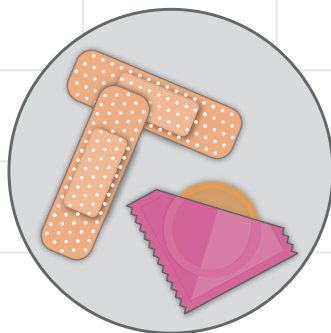
Nærfatnaður eða tuskur



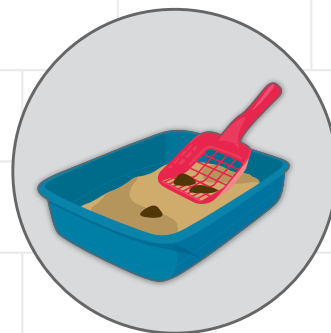
Blautpurrkur



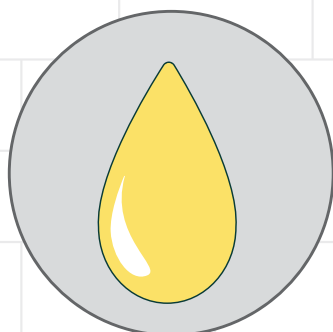
Lyf og vítamín



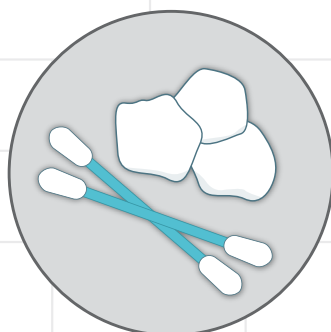
Smokkar, plástrar og sáraumúðir



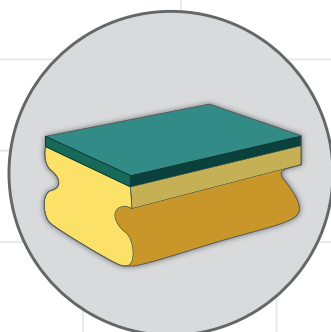
Kattasandur



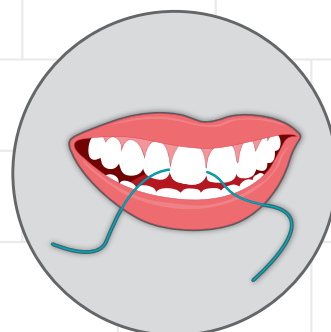
Olía eða önnur feiti



Eyrnapinnar og bómullarhnoðrar



Svampar



Tannpráður

Munum að klósettið er **EKKI** ruslafata!

Lyfjum og lyfjaafgöngum á að skila í lyfjaverslanir